

Lakes Area Rescue

Helping our community, one call at a time



Who we are, how to help and get involved




Who Are We


 **Emergency Medical Services (EMS) and Rescue Services to Crow Wing and Cass Counties**

 **Dispatched through 911 with Fire, Law and Ambulance**


 **First Responders/First-On-Scene**

 **Over 60 Members Strong**
(Paramedics, EMTs, EMRs, Nurses, Firefighters)

 **Calls for Service in 2023: 823**
(31% increase 2022)

 **Over 20 years providing services**
Formally CrowWingZone1FR,
CrowWingZone2FR, East Gull Lake

 **Non-Government Organization**

 **Non-Profit, 100% Volunteer, 501(c)(3)**

Operate on grants, fundraising and donations : Receive no budgetary funding from local county or state government

www.LakesAreaRescue.com

Coverage Area

Crow Wing and Cass Counties

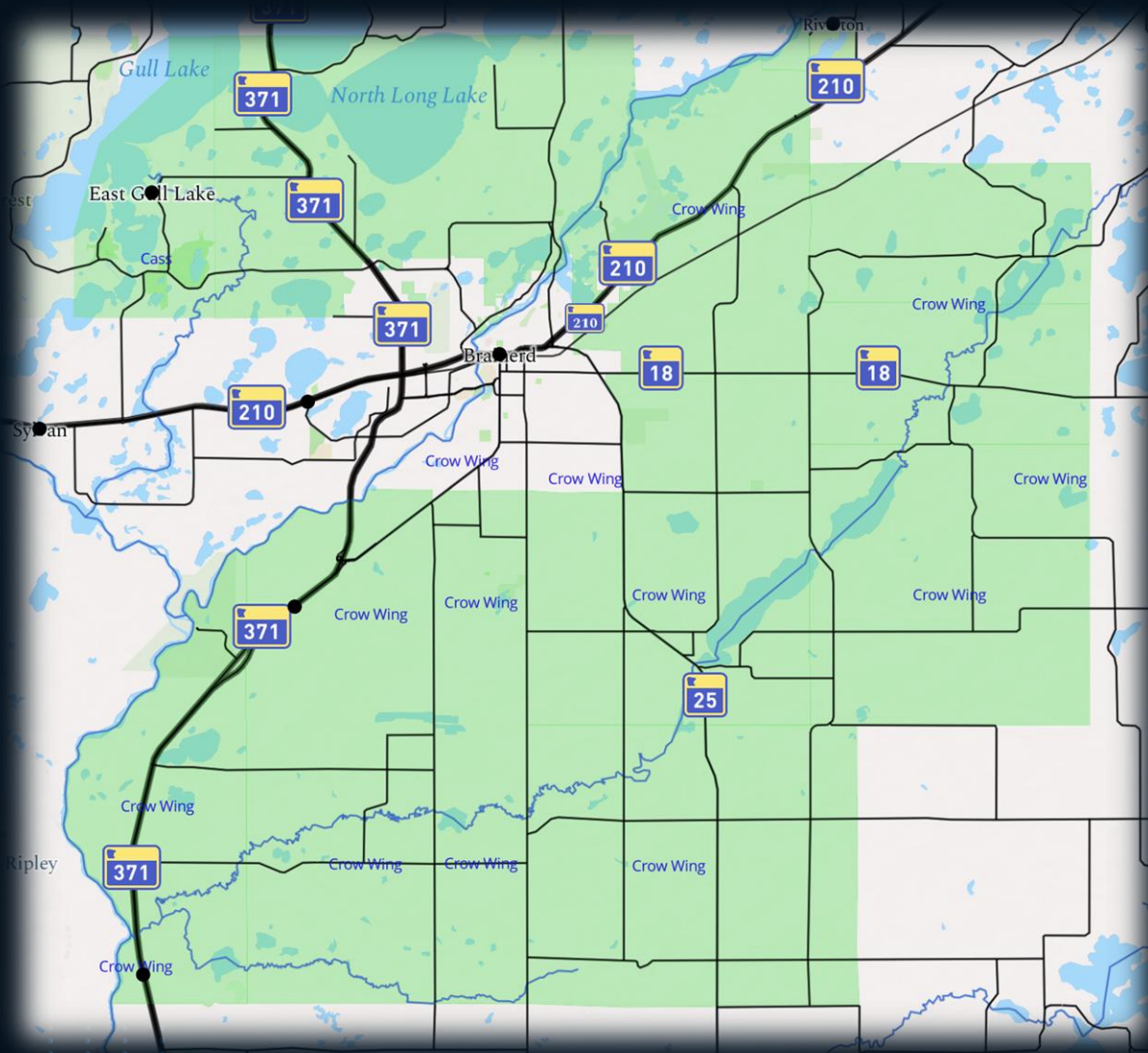
First Assessment District, East Gull Lake, Fort Ripley Township, St. Mathias Township, Crow Wing Township, Oak Lawn Township, Nokay Lake Township, Long Lake Township, Daggett Brook Township, Maple Grove Township

- Approx. 16,000 full time residents
- Approx. 350 square miles
- Community outreach and education (CPR\First Aid\Stop the Bleed)

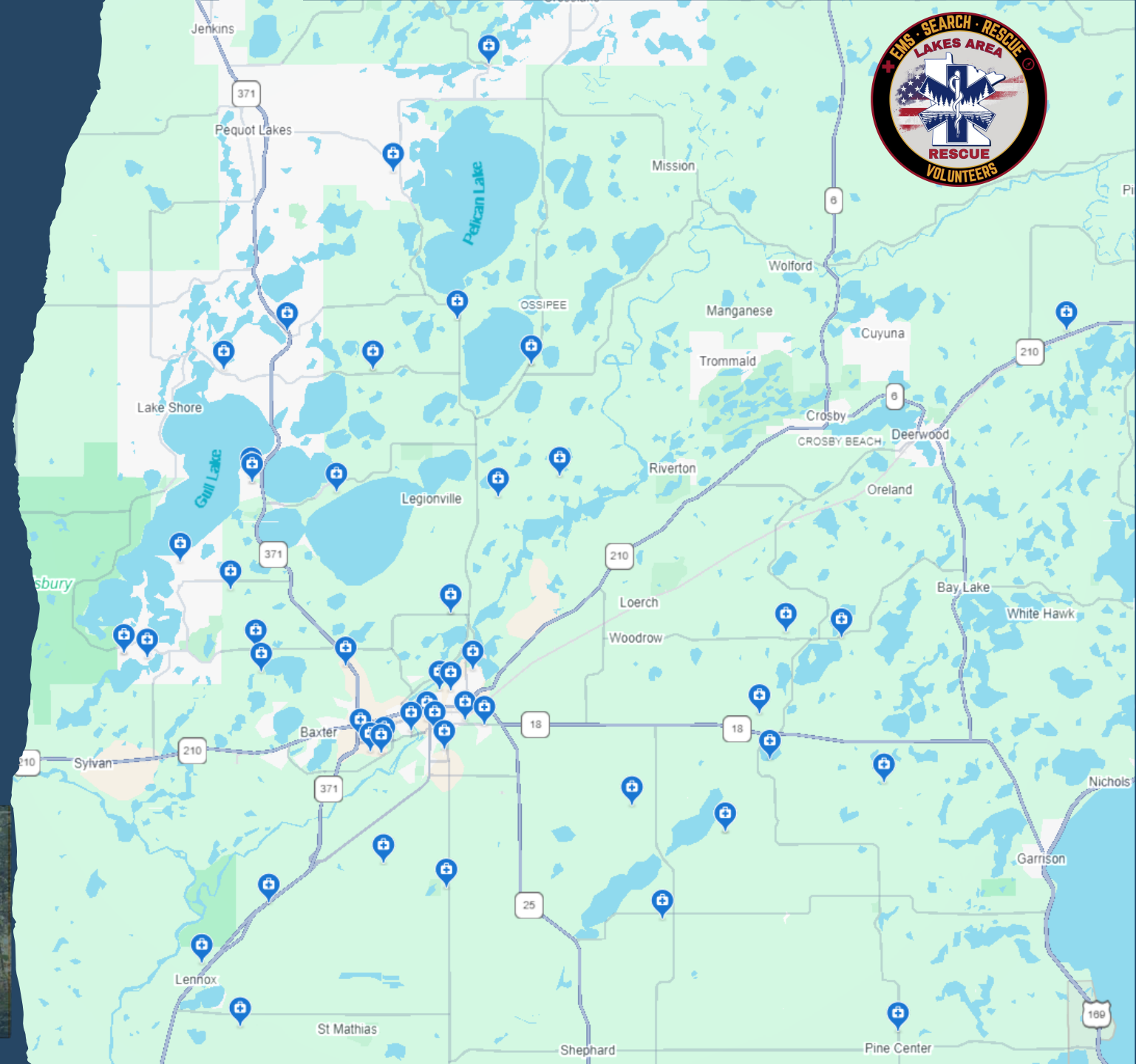
First responder partnerships with larger resorts, BIR, North Central Speedway, Huff Entertainment (Staff Responders)

Calls for Service types:

- Emergency Medical Services (EMS)
- Motor Vehicle Accidents (MVA)
- Search and Rescue (SAR)
- Fire EMS standby



Our Members



- Reside within or near our service areas.
- 60+ dedicated members and growing!
- Team includes Nurses, Paramedics, EMTs, EMRs, and Firefighters.
- Many members also serve at local fire departments, clinics, hospitals, and ambulance services.
- Each member is equipped with essential tools: medical bag, medications, AED, radio, and pager.
- Exceeds state EMS training standards.
- Continuously training and mastering new skills while staying updated on current EMS policies and procedures.



Our Leaders

Business

President: Brittany Mogensen

Vice-President: Josh Waagmeester

Secretary: Mikayla Rahto

Treasurer: Necole Lyons

Board Member(s): Dave Kavanaugh

Operations

Chief: Josh Waagmeester

Deputy Chief: Daryl Rubbelke

North Captain: Eric Anderley

South Captain: Matt Krebsbach

North Lieutenants:

Adam Kainulainen

Sam Klinger

Nick Mogensen

South Lieutenants:

Corey Hannahs

Mikayla Rahto

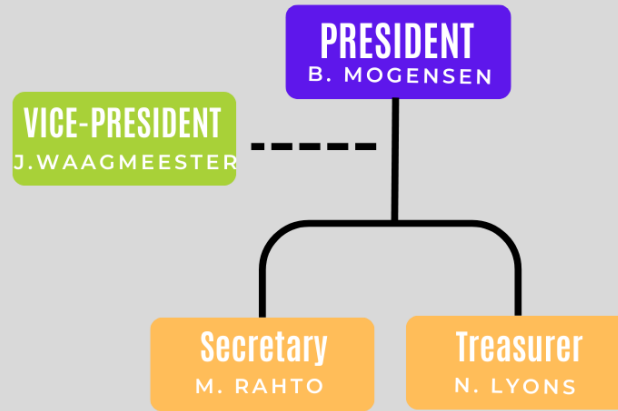
Chris Wallace



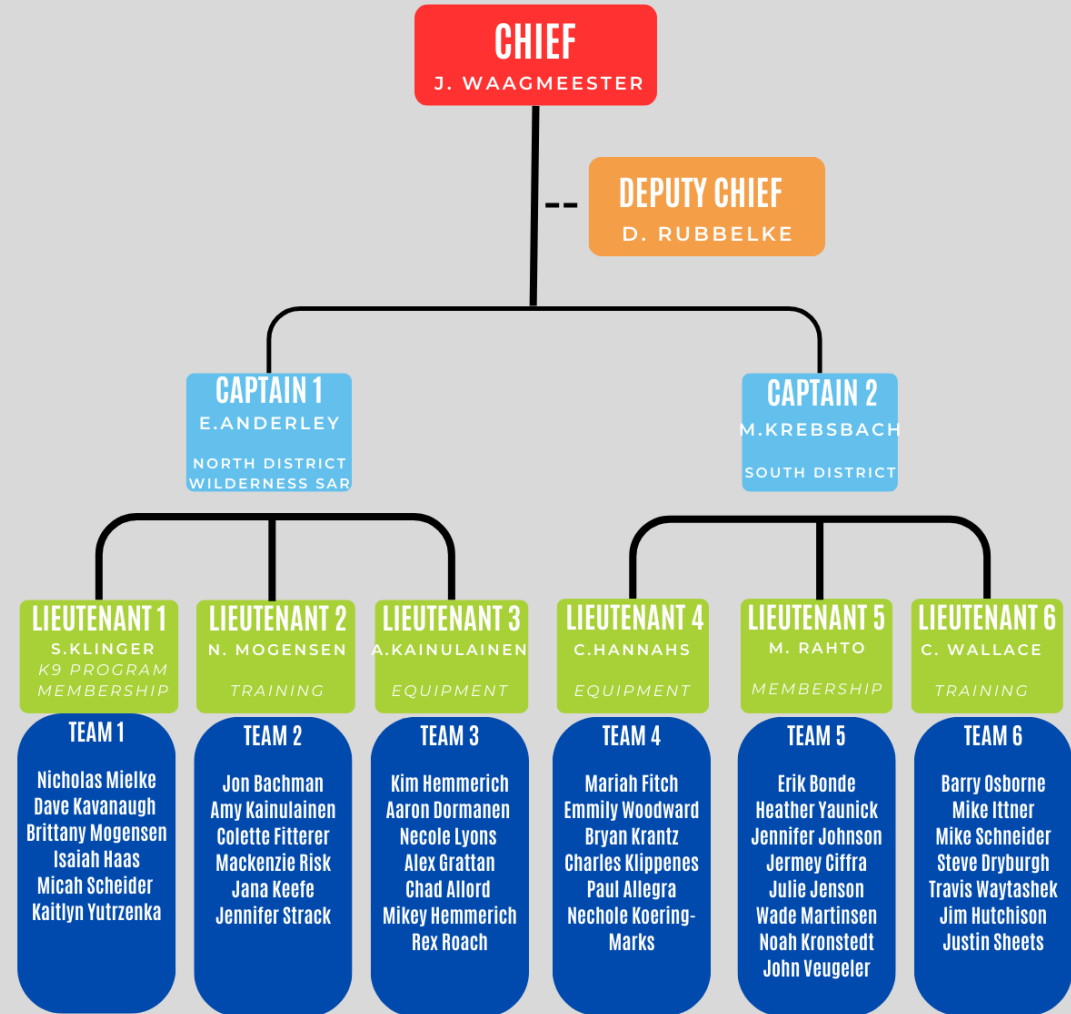
LAKES AREA RESCUE
ORGANIZATIONAL CHART

Board of Directors

BUSINESS



OPERATIONS



Organization
Structure



Community Events

- **Brainerd International Raceway – EMS**
Coverage throughout the year
- **North Central Speedway - EMS**
Coverage throughout the year
- **Lakes Area BMX – Event Coverage**
- **Crow Wing County Fair**
- **Lakes Area Rescue Meet and Greet**
- **And More**



Our Growth and Future

**2000 -
2017**

Zone 2 First
Responders
(1-4 First
Responders)

2022

Incorporated
as a non-profit
501(c)(3),
rebranded as
Lakes Area
Rescue
(18 First
Responders)

**August
2023**

Rescue 1
LUCAS device
Added to
Fleet

May 2024

Zone 1
Merger
(58 First
Responders)

October 2024

Starts ongoing
SAR Trainings
First UTV added
to fleet

2018

Fire
Department
Members
(10-12 First
Responders)

2023

Added East
Gull Lake
Coverage
(26 First
Responders)

2024

Started
Expansion into
Search and
Rescue (SAR)

July 2024

Drone
Program
6 Pilots
1 Thermal
Drone

2025

Fundraising for
Wilderness SAR
Equipment and
Training
K9 Expansion
Additional EMS
Response vehicle and
LUCAS for South
District





Response Vehicles

RESCUE 1 & RESCUE 2

- RESCUE 1 Serves Northern, RESCUE 2 Serves Southern
- Fully equipped emergency response squad vehicles
- State approved Code 3 response (Lights\Siren)
- Equipped with LUCAS chest compression device
- Additional higher priced and more specialized equipment
- Provides coverage to Northern and Southern LAR coverage
- Provides additional safety for our members and quicker response time
- Rotating schedule with members to keep staffed
 - Daily driver for member when assigned





The Need: Search and Rescue (SAR) in our community

Population Growth and Tourism:

Brainerd Lakes Area sees steady growth and increased tourism, adding pressure on emergency response resources. Crow Wing's population reached 67,948 in 2022 and is expected to grow to approx. 87,000 in the next 40 year.

Aging Population:

- Crow Wing: 23% and Cass: 26% of residents are 65+, higher than the 15.9% state average.
- Rising Alzheimer's cases projected to reach 120,000 statewide by 2025, increasing SAR needs for at-risk seniors who may wander into remote areas

Increased Cases Involving Vulnerable Populations:

1 in 34 children in Minnesota identified with autism; these children and individuals with dementia often display erratic behaviors and may hide from searchers, complicating SAR efforts

Shift in SAR Mission Focus:

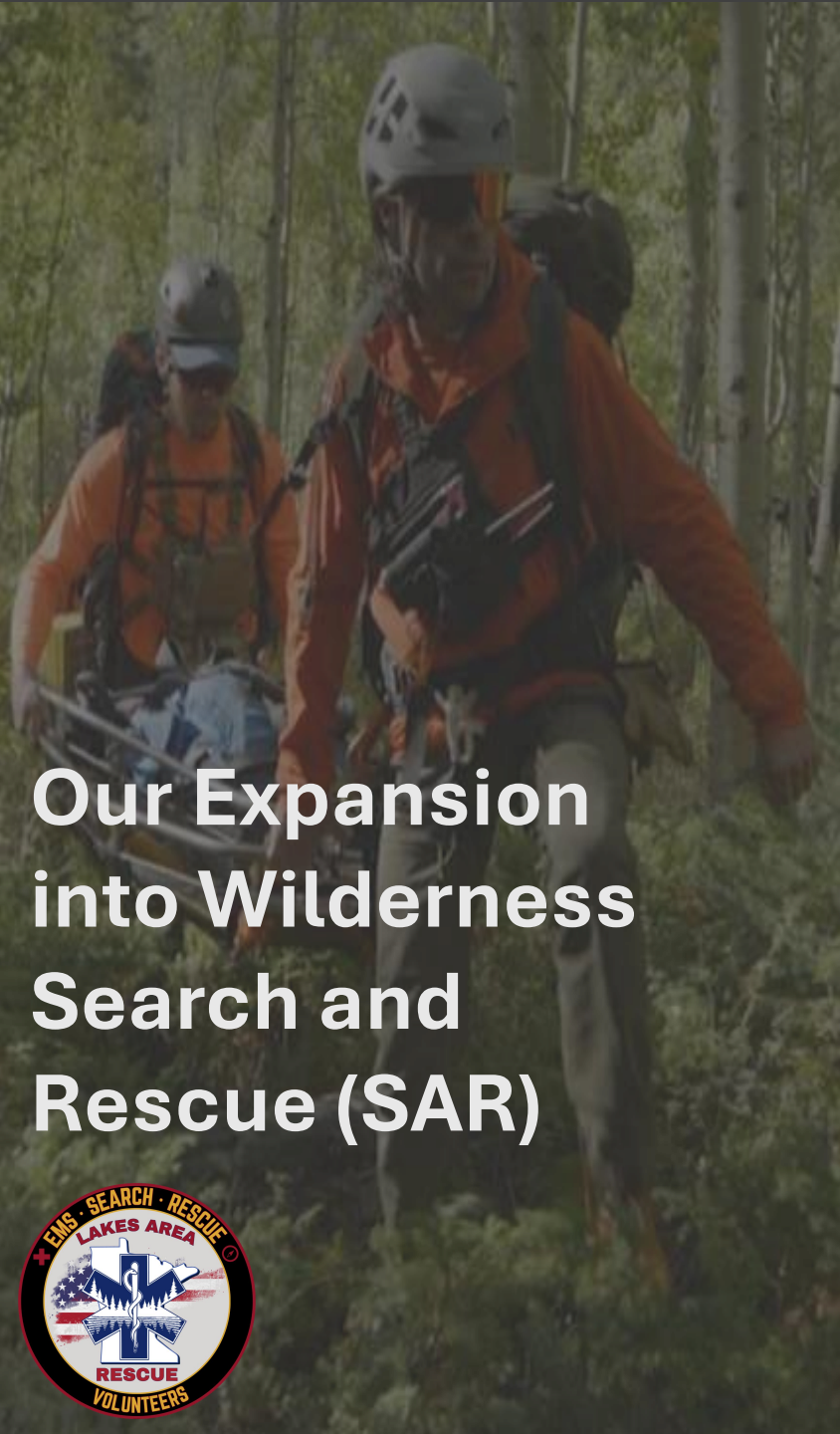
Nationally, SAR cases now increasingly involve vulnerable adults and children rather than only lost outdoor enthusiasts. About 2,000 missing person cases are reported daily across the U.S., with rising demand for tailored SAR responses for cognitive and developmental impairments

No Centralized County-Wide SAR Team:

Current SAR efforts rely on fragmented resources from fire, police, and drone teams, lacking a coordinated, specialized SAR unit for wilderness rescue

Population Growth and Demographics: "Crow Wing County, MN - Profile data," Census Reporter, 2023 [Census Reporter](#) ; "Crow Wing County, MN Population - 2023 Stats & Trends," Neilsberg [Neilsberg](#)
Aging Population and Alzheimer's Data: "Cass County vs. Crow Wing County - Comparison," Index Mundi, [IndexMundi - Country Facts](#).; "Minnesota Department of Health," Alzheimer's projections, Minnesota Dept. of Health [Cass County, MN](#).
Autism and Vulnerable Populations: "A Snapshot of Autism Spectrum Disorder in Minnesota," CDC, 2023, [CDC](#).; "UMN researchers unveil Minnesota autism rates," University of Minnesota, 2023, [University of Minnesota Twin Cities](#).
SAR Efforts and Behavioral Science: "Lost Person Locator," DHS, [U.S. Department of Homeland Security](#).; "Lost Person Behavior: Effective Search and Rescue Strategies," NeuroLaunch, [NeuroLaunch.com](#).
National SAR Trends and Vulnerable Adults: "Alert Systems for Missing Adults in Eleven States," Congressional Research Service, [Congressional Research Service Reports](#) ; "Exploring 'Lost Person Behavior' and the Science of Search and Rescue," Social Science Space, [Social Science Space](#)





Our Expansion into Wilderness Search and Rescue (SAR)



Mission-Driven Expansion

The expansion into Wilderness SAR aims to support and collaborate with local Fire Departments, Law Enforcement, and other agencies, respecting the vital roles they play. Not to displaced but enhance.

Providing Additional Support

- We aim to provide additional manpower, highly trained individuals, and specialized equipment to assist during rescue calls in challenging wilderness areas.
- Our role is to supplement—not replace—existing services, ensuring swift, effective outcomes for operations that demand extra resource

Uniform Practices and Seamless Integration

- Through advanced SAR training, we’re establishing uniform practices and standard operations across agencies.
- This groundwork ensures seamless integration if specialized resources, like St. Louis County Rescue, are ever needed, enabling us to follow best practices collaboratively

Time is critical

- First 12 Hours: The Golden Hours**
- **85%** of missing individuals are found within the first 12 hours.
 - The chances of a successful rescue are highest during this period. Immediate action is critical for a successful outcome.

Strategic Partnership with other SARs

- Partnering with St. Louis County Rescue Squad as a “Big Brother” to elevate SAR expertise and coordination.

Establishing Wilderness SAR for Crow Wing and Cass Counties

- Providing SAR services for both counties, focused on wilderness and missing persons cases.

Supporting Fire, Law, and EMS Agencies

- Offering specialized SAR equipment and training to assist fire departments, law enforcement, and EMS, enhancing regional response.

Expanding K9 Search Team

- Adding trailing and human remains detection dogs to our SAR team to enhance search capabilities for missing persons

Growing SAR-Focused Membership

- Recruiting members with a focus on SAR, including local FD, Law and EMS personnel, to strengthen community connections and response readiness.

High-Quality EMS Services

Continue delivering high-quality EMS, ALL rescue related calls involve an EMS component

Public Safety is a Team Effort

Together, We Are Stronger, and our Community is Safer

Working Together for the Community: No Room for Egos or Territorial Behavior

Our Intent:

To collaborate and partner with local fire departments, law enforcement, and emergency services to strengthen our community's response capabilities thus increasing the safety of everyone.

Our Vision:

We are committed to providing highly trained members and specialized equipment in partnership with existing agencies. We do not aim to replace current fire department operations.

Our Approach:

We work under the command or direction of local fire departments, law enforcement and sheriff's office.

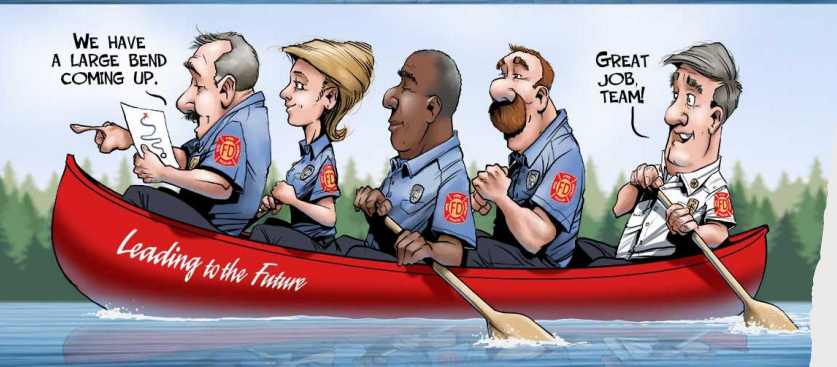
Our team focuses on supporting and complementing existing efforts, not competing for authority or resources.

Why This Matters:

Egos and territorial squabbles hinder critical emergency response, limiting the ability of first responder agencies to work together effectively, which ultimately harms our community by preventing valuable partnerships that are crucial for providing the best care and service that our community deserves and expects.

Our Promise:

We always prioritize the needs of our citizens, community, and visitors. Together, we can accomplish more.



The cost of growth

A New Member

- \$7000 – medical bag, medications, safety gear/PPE, AED, pager and radio
- \$1,500 – \$2000 EMS training
- \$125/year – insurance

Approx. = \$9,000/new member

Existing Members (Annual Costs)

- \$250 – equipment upgrades/replacement
- \$100 cont. EMS training
- \$125/year – insurance

Approx. = \$500 per member/year

(\$30k/Year)

Search and Rescue Expansion

- Wilderness SAR dept. training (\$10k) ✓ (FUNDED!)
- Wilderness personal gear (\$10k)
- SAR K9s (\$50K)
- (2) Response squads (\$50K) ✓ (FUNDED!)
- Equipment Trailer (20k)
- Thermal drones (\$10-15K) ✓ (FUNDED!)
- UTV (\$25-30K) ✓ (FUNDED!)
- Sherp (\$150-200K)

Approx. = \$390k

Physical Location\Home Base

- Costs TBD (In-Process)



Our Top 3 Priorities – But we need Help

What:



Increasing coverage, response, safety and equipment in the right place at the right time for our south district.



How:
Accomplished!
Adding an additional Rescue Response Squad with a LUCAS to our Southern District – ~\$50k (Targeting early 2025)



Train and Equip for Wilderness Search and Rescue



1st part: Partnering with state's best SAR team and acquiring the best training from providers like NASAR (National Association for Search and Rescue) - \$10k
2nd Part: Securing funding to procure rescue gear for members, off road vehicle, GPS handheld, additional thermal drone - ~\$325k



Secure a Home Base, for storage, equipment, training hub.



Find a central location to rent or purchase and secure donors to help



Fundraising, Grants and Donations!

- No county, state or federal budgetary funds
- Donations and Grants how we exist
- Annual event (Meet and Greet event in May)
- Ongoing fundraising campaign. (QR Code)
- Several mailers, posters throughout the year
- Social media, networking, word of mouth
- Grants
 - If it exist and fits, we apply
 - Sourcewell non-profit impact (LUCAS device in 2023)
 - Firehouse Subs (Polaris Ranger 1000 XP Crew)
- Last Year (2023)
 - Donations \$73,390
 - Grants \$58,917
 - **Total = \$ 132,307**





WE NEED YOU

JOIN US

BECOME A FIRST RESPONDER

HELP GIVE BACK TO YOUR COMMUNITY

TRAINING AND EQUIPMENT PROVIDED

LEARN NEW SKILLS IN EMS AND RESCUE OPERATIONS

JOIN A FUN AND GROWING FAMILY DEPARTMENT

DONATE

HELP SUPPORT OUR FIRST RESPONDERS WITH:

LIFE SAVING MEDICAL EQUIPMENT

RESCUE EQUIPMENT

SPECIALIZED TRAINING

NON-PROFIT 501(C)(3)

learn more at: LakesAreaRescue.com



Lakes Area Rescue provides EMS and Rescue Services in Crow Wing and Cass Counties
100% Volunteer & 100% Donation funded



THANK YOU!!

Donations:

We are a non-profit 501(c)(3) organization registered at both federal and state levels.

Join us:

1st Responders: We provide all the equipment and training needed. No prior experience needed; just a willingness to help others.

Volunteers: Non-EMS role. Event planning, Fundraising, Grant Writing, Public Events, Media, etc.



Learn more

www.LakesAreaRescue.com

